



Image 1 VID1: large salmon holding in and around the turbine blade.



Image 2 VID1: salmon (circled) being flung from top to bottom right of the cage by the turbine blades. 1:17 s into video.

VID2



Image 1 VID2 large salmon swimming just behind the turbine blades. (00:14 s)



Image 2 VID2: smaller salmon leaps into the turbine and is flung off across the turbine and into the cages.

VID3



Image 2 VID3: salmon being tossed into the cages by the turbine blade (00:59s)



Image 3 VID3: several fish can be seen in the flow directly behind the trailing edge of the turbine blade. (1:30s)

VID6



Image1 VID6: a salmon being thrown into the cages by the turbine blade (0:01s)



Image 2 VID6: another salmon being tossed into the cages by the trubine blades (00:18s)



Image 3 VID6: salmon on the turbine (01:18s)

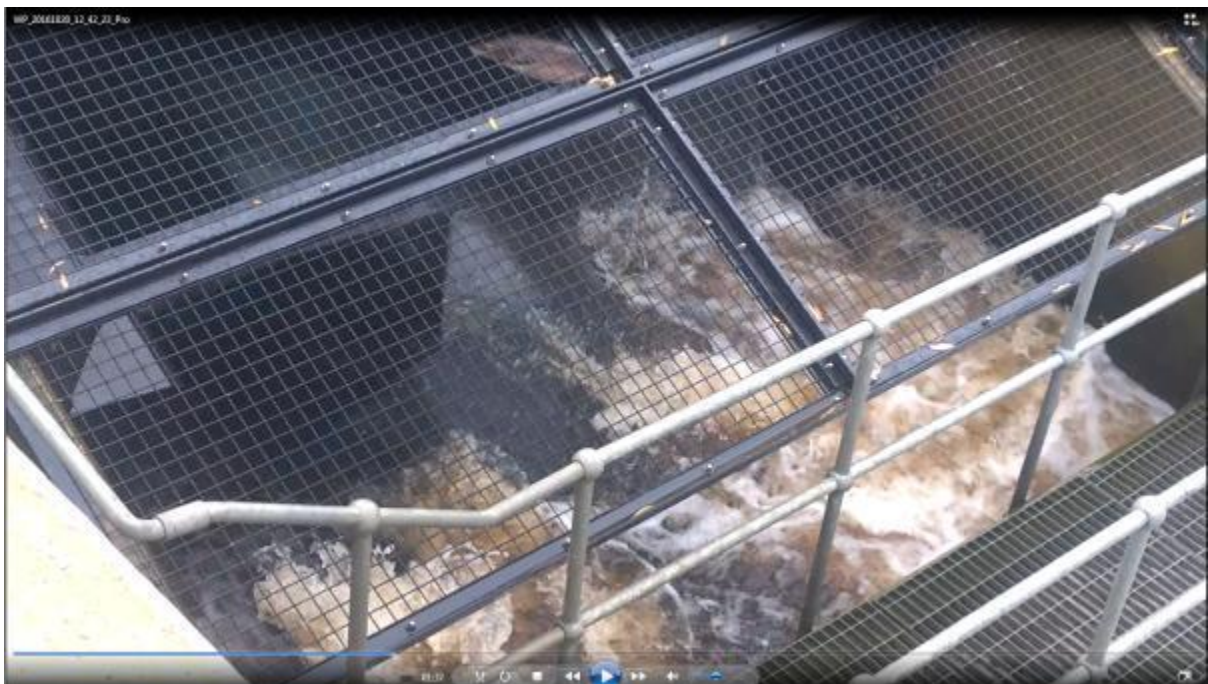


Image 4 VID6: Another salmon tossed into the cages by the turbine blade (01:37s)



Image 5 VID6: another salmon in the turbine (02:04s)



Image 6 VID6: this is the fishpass adjacent to the turbine. There is very little flow and nothing to guide fish away from the turbine to the fish pass